

RS1800 PLUG LOAD CONTROLLER INSTALLATION INSTRUCTIONS

The Audacy® Plug Load Controller is an AC-powered wireless receptacle control device, part of the Audacy Wireless Controls system. With it, you can wirelessly turn on or off your wall outlets – preventing items like coffee makers, task lighting, monitors or even personal fans and heaters from adding to your electric bill during off hours.

This product requires wiring to be performed per the NEC and local codes dictated by the AHJ.

WARNING: Before working on any circuits, verify that power is turned OFF to the branch circuit coming into the outlet box being updated.

RETROFIT INSTALLATION (FOR SINGLE OUTLET IN BOX)


1. Remove the old device and disconnect the Line and Neutral wires from device - Keep the ground wire attached.
2. Disconnect the Line and Neutral wires that were coming to the device from their pigtail connections.
3. Connect the Plug Load Controller (RS1800) LINE (black) and NEUTRAL (white) wires to the pigtails that were connected to the device that was just removed. These wires are on the side of the RS1800 which will face the box.
4. Re-connect the device to the SWITCHED HOT (red) and NEUTRAL (white) coming out of the RS1800. This side is facing out towards the device.
5. Terminate the wires to the device as required per the device installation instructions.
6. IMPORTANT: Position the RS1800 into the junction box so the serial number label is facing toward the outlet. See Figures A and B below.
7. Place “Controlled outlet” sticker on the face of the outlet. 
8. Or use a “Controlled Device” outlet which is properly marked for this application.

Figure A

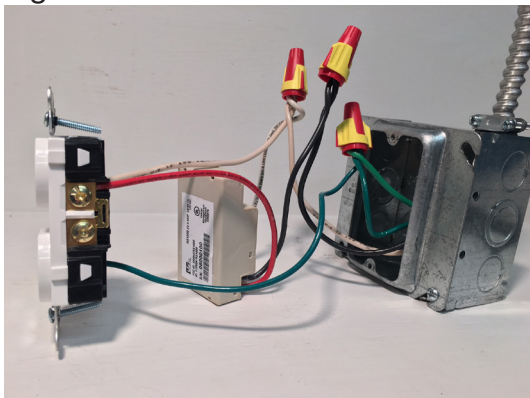
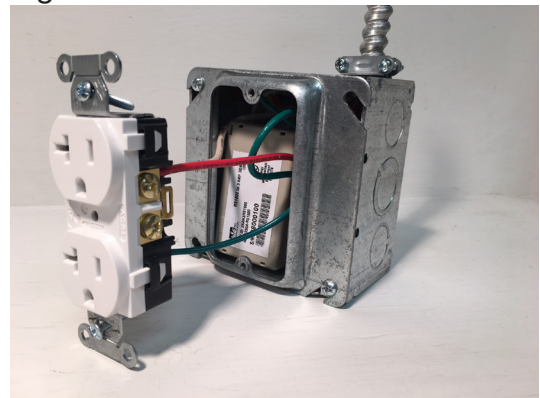


Figure 2



RS1800 PLUG LOAD CONTROLLER INSTALLATION INSTRUCTIONS

SERIAL NUMBER TRACKING REQUIREMENT

1. Remove the 2 tear-away stickers that contain the serial number of the Plug Load Controller (See Figure C).
2. Apply these to a drawing of the space containing the fixture or a tracking sheet to identify the serial number and its location in the room (See Figure D).
3. If these tear away labels are missing, please write down the serial number of the Plug Load Controller and keep readily available.
4. These serial numbers are required in order to have a complete Audacy operating system.

Figure C

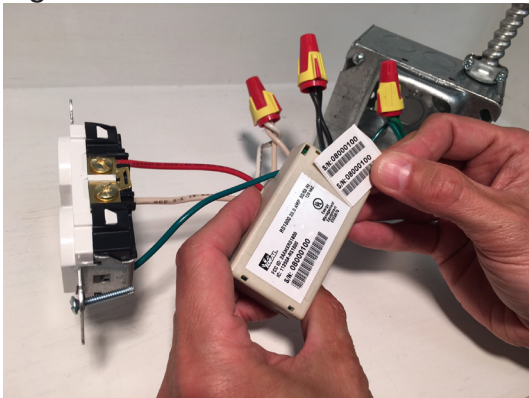
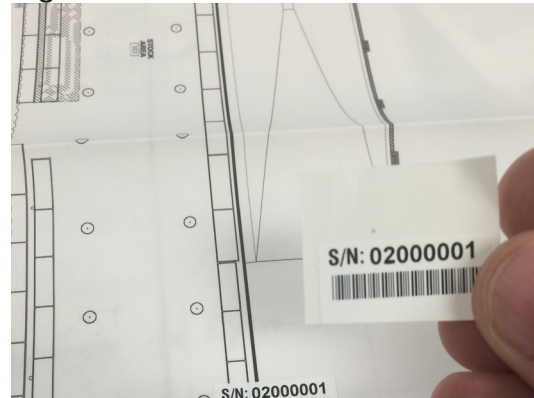


Figure D



RETROFIT INSTALLATION (FOR SINGLE OUTLET PLUS BRANCH CIRCUIT RUN CONTINUING FROM BOX)

1. Follow same instructions as above, but pigtail the red HOT wire to the run traveling to other devices on the same circuit.
2. You may run 2 separate runs that have 1 always HOT and 1 Switched HOT if so desired to the next run on the circuit